



# COMPANY PROFILE

ALTRUCS CONSULTANTS LTD

ALTRUCSLIMITED@GMAIL.COM



# INDEX

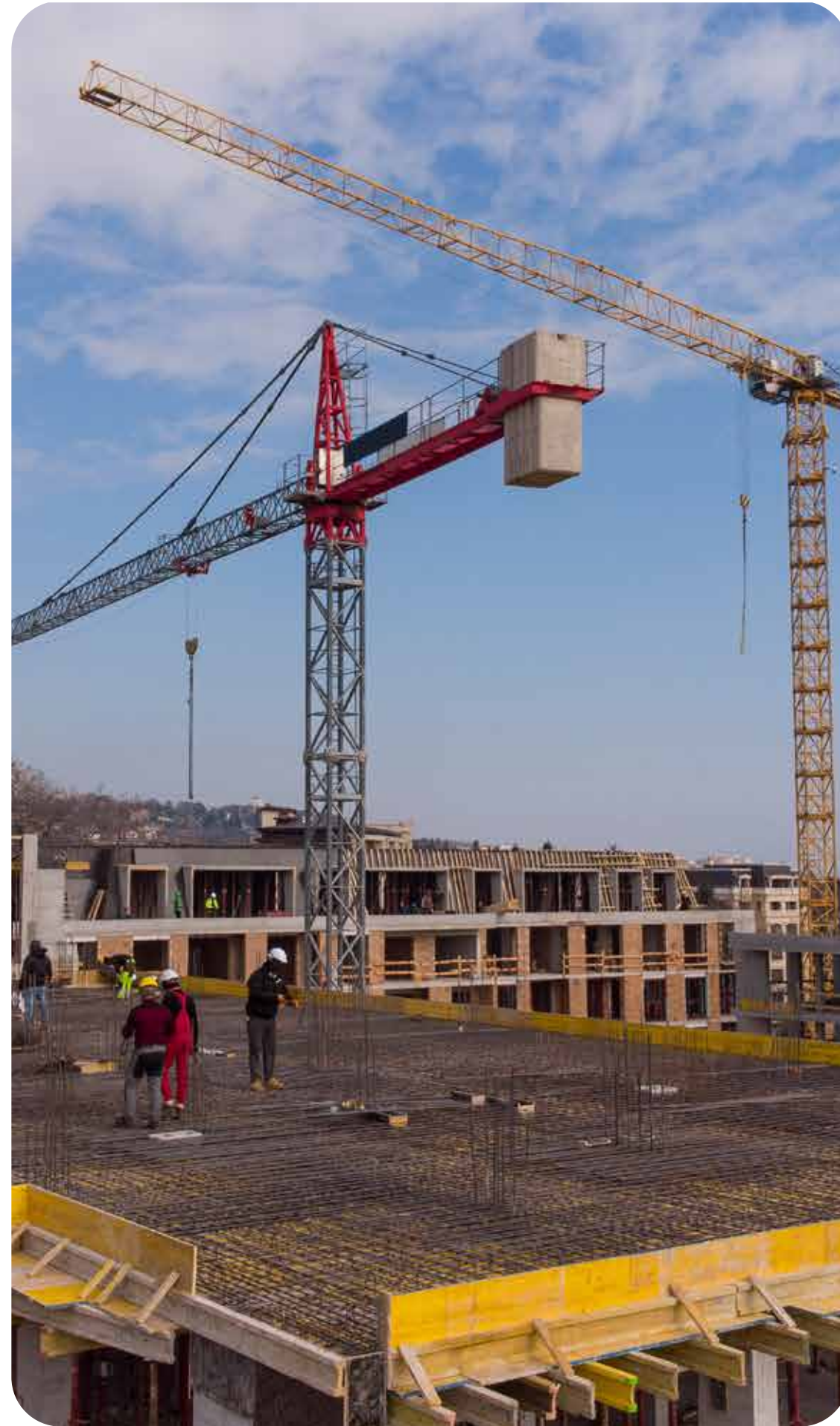
## TABLE OF CONTENTS

### What we do

2. Company Overview
3. Core competencies
5. Software owned
6. Recent Projects
7. Clients
8. Projects Portfolio







# Company Overview

Altrucs Consultants Ltd specializes in the Civil Engineering design of buildings and surrounding infrastructure. It was first established in 2021. The company is based in Nairobi with mandate of offering tailored structural & civil consultancy services to our diverse clients around the globe in all sectors.

## Mission

Our mission is to deliver tailored engineering soft solutions that enhance sustainable development, improve infrastructure and positively impact construction industry. Our goal is to prioritize safety, functionality, time, environmentally friendly and cost friendly services.

## Vision

To be the leading consultants in offering civil and structural engineering services known for efficiency, timely, safe and cost-efficient services.



# Core competencies



## Project Services

We have undertaken site selection and investigations to advise clients on the suitability of the site for the envisaged project.

We have been involved in Project Management services (to ensure work is done to the required standard, within the stipulated budget and time), Project Planning, Feasibility Studies, Cost Estimates and Engineering Control.



## Project Design

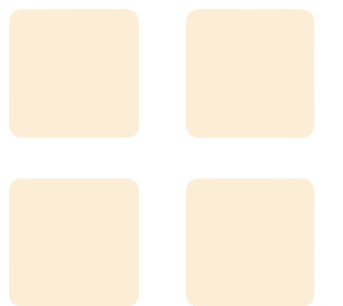
Before the commencement of any project, engineers insist several key tasks on performing. These include Topographical Survey, which gives detailed information about terrain and surface features. This information is essential for the planning and construction of any major civil engineering, public works or reclamation projects.

We have experience in this service in addition to producing Preliminary Design reports, Final Design, Specifications, Measurements and Quantities as well as Tender Documentation at the end of the exercise.



## Project Services

We have experience in Site Management, Construction Supervision, Quality Control, Materials Testing, Cost Control, Contract Administration and Maintenance Scheduling.





# Core Competencies



## Roads

We have undertaken Preliminary Studies and Route Selection, Topographical and Materials Surveys as well as Alignment and Pavement Design. In addition, I have expertise on Storm Water Drainage, Parking Facilities, Bus Terminals and Bridges and Culverts.



## Water

In water projects, we have been involved in Rural and Urban Masterplans, Intake and Treatment Works, Reservoirs and Elevated Storage Facilities, Pipelines, Distribution Networks and Pumping Stations dams.



## Structures

We have experience and expertise on Soil Investigations, Foundations Design, Low and High-rise Structures, Factory Buildings, Office Blocks, Residential Housing and Public Buildings. We have also done extensive work involving Liquid Containing Facilities, Retaining Walls, Silos, Storage Tanks, Bridges and Culverts, Dams, Elevated Highways and Structural Surveys.



# Software owned by the firm includes

- Autodesk Building Design Suite
- Prokon for Structural Engineering Analysis, design & detailing
- StaadPro for frame analysis & design
- Mathcad 15 Professional for general purpose calculation
- Microsoft Office



Also owned by the firm are internally developed packages and Worksheets to quicken the pace of the design process and achieve economies in structure costs by varying essential parameters, such as spans, member sizes and ground bearing strengths. Others have been written to check the accuracy of design based on the information shown on production drawings.







## Key staff employed are

- Godfrey Mugambi Mitheu  
Managing Director, Civil & Structural Engineering
- Heston Murimi Structural & Civil Design Engineer

## Relevant Recent and Ongoing Projects:

- Structural and Civil Design of a four-storey commercial building including for CET Industrial projected to cost Kshs 84 Million.
- Structural design of Security Facilities for Mogadishu Services Limited in Somali. Currently at Construction commencement stage.
- Structural design and construction supervision for a eight storey apartment development in Thika for Michael Gatua. Construction about to commence.
- Structural and Civil Engineering design of cottages and conference facilityIn Meru for Impreza Limited. Currently at tendering stage.
- Structural and Civil Engineering of a six-storey furnished apartment for Impreza Limited in Meru. Currently in construction stage.
- Structural design and construction supervision for the Kamakis Storage Facility for Jamex Express. Currenty at construction Stage.
- Structural and Civil Engineering design and construction supervision for 2 no. 5 storey apartment blocks for Michel Gatua along Thika Road. Construction now complete.
- Structural and Civil Engineering design and construction supervision for 5 storey apartment blocks in Rongai, Nairobi for Arch. Mburu. Now in Construction finalization.
- Design and construction Supervision of various developments at the Davis & Shirtliff, Nairobi.
- Structural design and construction supervision Kenol Kobil filling station along Mukenia Road South B Nairobi. This includes the canopy and tank supporting structures with a two-storey station building. This is complete.
- Structural and Civil Engineering design and construction supervision of two 12 storey apartments along General Mathenge for L R Patel. Currently under Construction at finishing stages.
- Structural and Civil Engineering design and construction supervision of 10 storey apartments building on Riverside Mews off Riverside Drive. Currently under construction.
- Structural and Civil Engineering Design and construction supervision of a 6 storey shopping mall at Naivasha. Currently in design stage.



# SELECTED LIST OF ALTRUCS CONSULTANTS CLIENTS

---

- |   |  |  |
|---|--|--|
| <ul style="list-style-type: none"><li>• Archi-Hub Studio Limited</li><li>• 3D Homes</li><li>• Davis &amp; Shirtliff</li><li>• Methodist Churches in Kenya</li><li>• Rims Limited</li><li>• CET Industrial Limited</li><li>• James Express</li></ul> | <ul style="list-style-type: none"><li>• Sagana Nuts Limited</li><li>• Ozone Enterprises</li><li>• Arch. David Kinyua Irungu</li><li>• Maiyan Nayuki Luxury Resort</li><li>• Impreza Limited</li><li>• Meru County Government</li><li>• China Jiangxi</li></ul> | <ul style="list-style-type: none"><li>• Michael Gatua- CEO Sni</li><li>• Cubes and Beyond Limited</li><li>• Apt Building Associations</li><li>• Mogadishu Services Limited</li><li>• Afrimac Limited</li><li>• Arch. Michael Mbithi</li><li>• Arch. Eric Plal Kisang</li><li>• Peaks Hotel Nanyuki</li></ul> |
|---|--|--|





# PROJECTS PORTFOLIO

CLIENT PROJECTS

















# THANK YOU

Westcom Point Towers -3rd floor,  
mahiga mairo, Muthangari Drive Westlands  
P O Box 12587, postcode 00400

Email address:  
[altruclimited@gmail.com](mailto:altruclimited@gmail.com)  
[mugambimitheu@gmail.com](mailto:mugambimitheu@gmail.com)